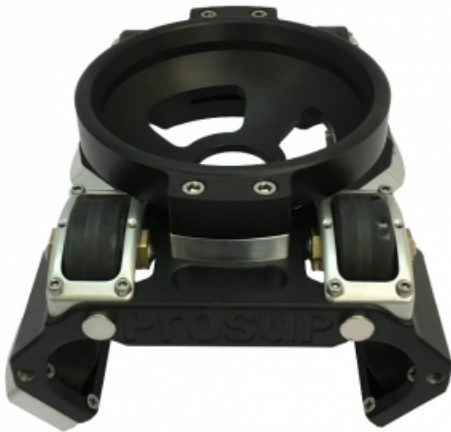


Tango Roller 150



Description brève du produit :

The Tango Dolly performs with purpose made, high quality wheels and roller bearings combined for optimum shock-free, smooth movement. The Tango Roller is maintenance friendly and can be operated in any environment. The lightweight roller system is ideal for camera packages up to 15 kg and can be used in both over- and undersling configurations.

Codes produits :

Référence PS350-150

EAN13 : -

CUP : -