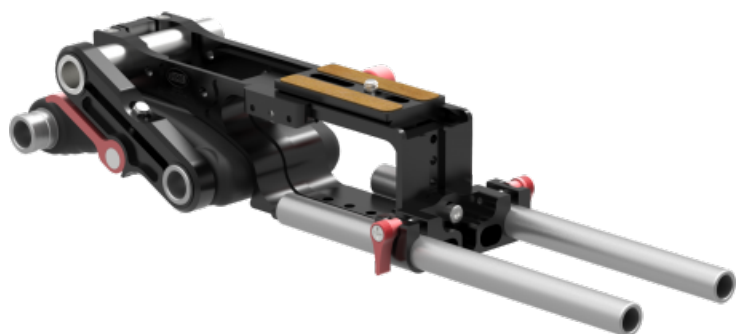


Vocas FCR-15 Crosse d'épaule flexible



Description brève du produit :

Le FCR-15 est une épaulière flexible compatible et recommandée pour les caméras possédant une poignée supérieure.

Codes produits :

Référence 0350-3000

EAN13 : 8720041004561

CUP : -

Description du produit :

15 mm Flexible Camera Rig for DSLR cameras, solid state camcorders and small cine cameras.

The FCR-15 is a 15 mm height adjustable camera rig with an ARCA balancing system and an extremely flexible shoulder pad, which offers a high variety of shoulder mounting positions.

The top of the rig is equipped with an ARCA camera dovetail plate, offering quick release sliding and balancing options for your camera setup. The ARCA camera dovetail plate slides in from the front or the top of the rig.

On the right rear end, the shoulder pad is attached to the rig via an extender to a horizontal 19 mm tube. The quick lock lever of the extender enables you to set the shoulder pad quickly in many different positions. For instance, the shoulder pad can be used directly underneath the rig for a comfortable shoulder setup, or into a compact chest support setup. Furthermore, the position of the shoulder pad can be set about 100 mm backwards, while adjusting the angle of the shoulder pad as well.

The quick lock lever also enables you to take out the shoulder pad and attach the shoulder pad to the rig in an offset position, transforming your shoulder rig in an offset shoulder rig. The variety in positioning of the shoulder pad is a unique feature, making this rig compatible with any DSLR camera, solid state camcorder or small cine camera.

By using any of the above setups, the rig is a perfect solution for using the cameras front viewfinders and LCD screens, and LCD screens and viewfinders on the back of the camera.

The quick lock lever enables you to expand and collapse your rig in just a second. Perfectly easy for packing your rig into your small camera bag.

The height adjustable front rails of the FCR-15 provide compatibility with almost any camera DSLR camera, with or without battery pack, solid state camcorders and small cine cameras!

On both sides of the rig, an optional rosette (0390-0320) can be mounted in order to mount handgrips or other standard rosette accessories. The bottom of the plate is equipped with several 1/4" and 3/8" thread holes for mounting all kind of tripod plates.

An optional 15 mm clamping block(0350-2010) can be mounted to the back of rig, offering the possibility to mount any 15 mm rail accessory to the back of the camera, for instance a battery, recorder, monitor or counter weight.

DESCRIPTION :

- Rosette : Optional
- Shoulder pad : Adjustable, Removable, Toolless
- Shoulder pas size : Standard
- Bars position : Front, Optional rear
- Bar system : 15mm
- Height adjustable : Yes
- Camera mounting points : 2
- Package included : 0350-3050 ARCA dovetail plate, 0350-9210 15 mm bars (2x)
- Material : Aluminium, Cork, Rubber
- Color : Black
- Weight (gr.) : 977